

# EUREKA EXPRESS

VOL XXXII No. 7 CIRC 286

AUGUST 2011



## GO WAIKATO



## GUEST EDITORIAL

Hi there!

We are the Wallaces... Aaron, Anj, Millie (7), Leo (5) plus 1 on the way (due Dec). We've been in the area just over 3 years now.... and feel honoured to have the opportunity to write the guest editorial.

For those that don't know us... we're situated on the cnr of Eureka and Holland roads. You know the place... the one that started out as over 100 x 7 metre posts (damn peat) in the ground and then the appearance of what some said "Looks like a bl\*\*dy hall". A bit of blood, sweat and tears have been put in since then – so atleast now it's obvious we aren't in competition with the Eureka community hall!

### The House

We thought we would give you some information about our place. The original Bungalow was built around the 1940's and had at least three extensions over the years.

The building was relocated from Melody Lane at the Ruakura Research Campus where its former existence was "Melody Lane Preschool". Prior to that we believe it was a staff house or single mans quarters.

The building came in three pieces and took some 4 hours to travel Ruakura Road, Morrinsville Road and Eureka Road. We renovated the dominantly open plan floor space, adding/removing walls and halls from the preschool layout. Creating a pretty comfortable 4 bedroom home.

### Eureka

We love living in Eureka, and enjoy our rural surroundings and are thankful for the support we have received from everyone local. The Eureka area is such a great place to live and bring up children, and the sense of country community is exactly what we wanted for our family.

We enjoy being close to town but far enough out to have a true rural outlook. Not to mention pretty good views of Waikato's two most dominant natural landmarks which have both recently been covered in the cold white stuff. And within this last week daily new born calf spotting across the road.

Wishing the community well as we head into spring.  
Go the All Blacks!!!

The Wallace's



## RAINFALL

	July 2011	Year to 31 <sup>st</sup> July
Total (mm)	154	890
Average (1994-2011)	138	694
Difference	+16	+196

Rainfall recorded on 21 days

In the period 1994-2011, the year to date total 890 mm is only exceeded in 1995 with 949 mm. The

## SNIPPETS



**WELCOME TO EUREKA:** to Clinton Bell and Rosie Short who are now living in Verryt's cottage on Schollum Road. Clinton works for Walling Contracting and Rosie for Genesis Energy. A warm welcome to you both.

**GETTING TO KNOW YOU:** It has been suggested that we publish interviews, in question and answer format, with our residents to get to know the interesting folk in our midst, and also to hear the highlights of travels undertaken by locals. If you would like to volunteer please phone Gail, 8241758. Otherwise we could be contacting you sometime soon either by phone or email.

### Condolences

Sincere condolences are extended to Robert (Ace) and Vicki Dance of Eureka Road on the death of Robert's father, Mr Jack Dance in Hamilton on August 2<sup>nd</sup>, at the wonderful age of 95 years. Jack lived and farmed on SH26 (ex Bettley's) with his family from 1962 -72 and Robert attended Eureka school for five years during that time, so the family ties to Eureka go back a long way.

Deepest sympathy is also extended to Kathryn Schicker, John Little, Rebecca and Michael, of Manor Park, on the sudden passing of Kathryn's mother, Mrs Margaret Schicker of Whangarei on August 14. Margaret was also a loved Nana of Tania (and Elliot) Billings and Great-Nana of Olivia and Corban Billings. She will be sadly missed.

**AGM**

**AGM**

**AGM**

### **The Annual General Meeting of the Eureka Hall Committee**

**will be held at 7.30pm, Tuesday 30 August 2011**

**at the Eureka Hall**

**All welcome.**

Secretary





## MARKET PLACE

**WANTED:** Hay. Suitable for ponies. Please phone Michelle 8241746

### **DUAL CLEANERS AVAILABLE**

Weekly or spring cleaning

Covering the local area

Call to discuss your cleaning requirements

Ph Jackie 824 1607



### **FERTILISER FOR SALE**

**LIME \$10 per 10KG BAG**

**GENERAL GARDEN (12N/10P/10K) \$8 per 5KG BAG**

**(OR ANY TWO BAGS FOR \$15)**

I am fundraising for a Hamilton Boys High School trip to Nepal (December 2012) as part of "World Challenge" which provides personal development and leadership programs, teaches life skills and culminates in a month long expedition. While in Nepal we will undertake a community project (e.g. building a classroom, house or conservation work). Part of the challenge is to raise funds for the trip.

If you would like to support me please order some Lime or General Garden fertiliser (ideal for your gardens and lawns). I will deliver the fertiliser to your place and you can pay on delivery. Ring Michael 824-1161.

---

*belles & brides*



**Belles & Brides** is the Waikato's most comprehensive mobile beauty service. We offer an amazing range of beauty services including professional hair and makeup and a full range of pampering beauty therapy services.

**Weddings, At-Home Pamper Parties, and School Balls/Special Occasions, are our specialities!**

Thinking of having a night with the girls? Our Pamper Parties are a perfect way to spend time with friends all whilst getting pampered! Perfect for hens nights, birthdays, baby showers, or just a get-together with friends over a few nibbles and drinks!

**Quote this ad before September 30<sup>th</sup>, 2011 to receive 20% off your first individual beauty therapy booking with us, or to receive a \$50 host credit towards a pamper party!**

**Jump onto our website to see our full range of services, or call or email us to book!**

[www.bellesandbrides.co.nz](http://www.bellesandbrides.co.nz)

Ph (07) 8241852 or 0776717588

# Tauwhare School

P.O. Box 3207 Hamilton 3207 New Zealand  
t admin@tauwhare.school.nz  
f 07 834 6884



## School Roll: 137

What a great start to Term 3 –sunny days and SNOW! There was huge excitement at school when the first few wisps of snow came down.

We welcome Mrs Cook back from her travels around the U.K. and Europe. Linda and her family had a wonderful time! And we welcome Kylee back from Russia. Kylee is thrilled to be back at Tauwhare and is looking forward to her new role as teacher on Room 6 (Yr 1 & 2 children).

### OUT OF ZONE ENROLMENTS

The Ministry of Education has imposed an enrolment scheme on our school. While we have tried to make the zone as large as possible some of you may be outside the boundaries and must then apply to have your child enrolled in our school.

We are very keen to accommodate as many out of zone children attending Pukeko Pre-School as we can. To gauge the numbers we would appreciate if you could let me know as soon as possible if you are out of the entitlement area and would like to have your child come to this school.

There is a set procedure which schools must follow.

The board has determined that 10 places are likely to be available for out of zone students next year. The exact number of places will depend on the number of applications received from students who live within the school's home zone.

Next year there will be 2 enrolment periods. The first enrolment period runs from the first day of term 1 2012 to 31st May 2012. For students seeking enrolment within the first enrolment period, the deadline for receipt of applications for out of zone places is October 3rd 2011.

Parents of students who live within the home zone and intend enrolling their child at any time during the next year should notify the school by October 3rd 2011, if they have not already done so, to assist the school to plan appropriately for next year. Students who live in the home zone are entitled to enrol at the school.

Applications from out of zone students will be processed in the following order of priority:

- a. First priority must be given to any applicant who is accepted for enrolment in a special programme run by the school: (N/A)
- b. Second priority must be given to any applicant who is the sibling of a current student of the school;
- c. Third priority must be given to any student who is the sibling of a former student of the school;
- d. Fourth priority must be given to any applicant who is a child of a former student of the school;
- e. Fifth priority must be given to any applicant who is either a child of an employee of the board of the school or a child of a member of the board of the school;
- f. Sixth priority must be given to all other applicants

If the number of out of zone applications exceeds the number of places available, students will be selected by ballot. If a ballot for out of zone places is required, it will be held on 8<sup>th</sup> October 2011.

Parents will be informed of the outcome of the ballot within three school days of the ballot being held.



Details relating to the second enrolment period are as follows.

- Length of enrolment period: from June 1<sup>st</sup> 2012 to last day of term 4.
- Deadline for receipt of applications: 1<sup>st</sup> October 2012
- Date of ballot: 4<sup>th</sup> October 2012

#### **TAUWHARE SCHOOL ENTITLEMENT ZONE**

- *The 'home zone' boundary commences at the intersection of SH26 and Platt Road and travels along Platt Road, into Shaw Road to its end. From the end of Shaw Road take a direct line to the Pukemoremore Road/Victoria Road intersection. Travel east along Pukemoremore Road (includes Lang Road) to the intersection with Scotsmans Valley Road.*
- *Turn right into Scotsmans Valley Road and travel through into Starky Road (includes Scotsvale Drive), and follow Starky Road to the intersection with Tahuroa Road. Turn left into Tahuroa Road and follow it through to the intersection with Tauwhare Road (includes Nicholls Road).*
- *Turn right into Tauwhare Road and travel along to the intersection with Schollum Road. Turn left into Schollum Road and travel to its end. From the end of Schollum Road take a direct line to the Waverley Road/Piako Road Intersection. Travel along Waverley Road into Holland Road and through to the Holland Road/Eureka Road intersection.*
- *From the Holland Road/Eureka Road intersection take a direct line to the end of Hinton Road and travel along Hinton Road to the intersection with SH26. Turn right into SH26 and travel along SH26 back to where the zone boundary commenced at the intersection of SH26 and Platt Road.*
- *(Both sides of all roads included unless otherwise stated).*

The junior children have been learning how to develop their personal voice in their pieces of writing. Judging by these examples, I'd say they have got it!!

On Friday there was a sick cow and a rotten calf and a man came and his name is Geoff. The calf's front legs fell off and intestines came out. My Dad said that the intestines were sausages and I had sausages for my dinner.

On Saturday there were two cows and Jackson and I saw them. The cow that was standing up had heaps of blood on the ground and its calf died. The vet needed to give the cow that was lying down an operation and he was nice because he made one stay alive but the other one died. I know how the calf died because the calf stayed in too long and I knew it was going to die. The dead calf broke its skull bone.

On Monday a nice man came and the cow's baby died. On Tuesday a big cow jumped on a little cow and the little cow broke its foot and we had to shoot the little cow.

By Regan aged 5yrs

My Nan gave me a watch. Why? Because I was being good. My Mum gave me some cream for me. Why? Because I need it. I lost my new hairclip. Why? Because it fell out of my hair.

By Jessica aged 5yrs

My Mummy bought a mango on Sunday. The mango needs to ripen so you can eat it. It will taste yummy. I've never had a mango before.

By Joshua aged 5 yrs

#### **STEP IN**

The next Step In for pre-schoolers aged between 4 and 5 years old is on Wednesday, September 7<sup>th</sup> from 9.00am – 10.30am.

**Have a great month!**

Welcome back to a new term. We hope that everyone had an enjoyable break from school routines, the children certainly returned with stories of all sorts of exciting holiday experiences. This term will be a particularly busy one, as you will see in the calendar incorporated in the newsletter, starting with Swim Safe and concluding with parent and teacher conversations.



#### Update from the PTA

We held our monthly meeting this week, and thanks to those who gave of their time to come. Our focus is still raising funds for the courtyard area and we have a number of things coming up, including a spring seed fundraiser which looks rather interesting... details to follow in due course.

We will be organising a 'new parent' get-together, which is basically tea/coffee and nibbles for parents whose children have started at the school within the last year or so. You don't need to be a very new parent to be there! And it's good to see some of our more established parents there so come along. It's a great opportunity to meet the parents of other children who are new to the school. It will be before the Hui for rooms 1 & 6, but again more details will follow, so look for it in your newsletter.

Our big upcoming event is of course Agricultural Day, which is one of our main fundraisers. There are a number of aspects to this event, with livestock, pets, alternative challenges, raffles etc, as well as refreshments on the day. It's a great day, but requires many hands to keep things going well. If you think you are able to help us out, please contact Paula Kenny on 021 712741.

#### Students at Newstead School were asked to record their ideas about why they think our school is cool...



"Newstead School is cool because we have two playgrounds".  
*Matthew Wade, Room 1*

"Newstead School is cool because of all the teachers".  
*Jacob Dromgool, Room 1*

"Newstead School is cool because we go to jump jam".  
*Madeline Coombes, Room 6*

"Newstead School is cool because there is a court to play with the skipping ropes and balls".  
*Kate Davis, Room 1*

"Newstead School is cool because we learn lots of writing".  
*Jasmine Wilson, Room 6*

"Newstead School is cool because we can do worksheets".  
*Jessica Harris, Room 6*



#### PTA Green Fundraiser

As spring is just around the corner we need to continue our efforts to raise money to develop the courtyard area. Our next initiative will be to sell seeds. Each child will be given a box containing 20 packets of seeds to sell at \$2.50 per packet (the school gets \$1 for every packet sold!).

Boxes will be given out on Thursday 1<sup>st</sup> September.

If you do not want to receive a box please let Natasha in the office know.

For more information contact Melinda Dresser on 8539018 or [melinda@dresser.org.uk](mailto:melinda@dresser.org.uk)



#### Enrolment Scheme

In the middle of September, the Board of Trustees will advise the community about the implementation of the enrolment scheme for 2012. At that stage they advertise how many out of zone vacancies there will be for the year ahead. We send application information to existing out of zone families who already have children at Newstead School and have a younger sibling turning 5 during 2012. To help us ensure our pre enrolment list is up to date, please check with Natasha in the school office

## Calendar of Events

22-25 Aug	Swimsafe (R6,2,4)
25 Aug	BOT Meeting
26 Aug	Rumpelstiltskin Show
29 Aug-1 Sep	Swimsafe(R3,5,1)
02 Sep	School Cross Country
05 Sep	PTA Meeting, 7.30 pm
06 Sep	Country Schools Cross Country @ Newstead
09 Sep	New parents get together, 1pm, Hui 1.45pm (R1 &6)
10 Sep	Soccer concludes
14 Sep	City & Country Cross Country
16 Sep	Daffodil Day
19 Sep	Class and Sports Photos
23 Sep	Hui 1.45pm (R2 & 3)
30 Sep	School Flower Day Reports Home
01 Oct	School Agricultural Day
03 Oct	Life Ed
04 Oct	Life Ed
05 Oct	Parent/Teacher Conversations 12.30pm
06 Oct	Group Day, Tauwhare School

# TAUWHARE INDOOR BOWLING CLUB

Another busy month has gone at the Bowling Club and our local club is coming to the fore at the Waikato Centre and making 'Tauwhare' more noticed.

Congratulations to the McNally sisters, Clare, Amber and Bronwyn who were selected to play in the junior section of the Hamilton Sub-centres team to contest the Kaimai Shield.

To I. Billings, A McNally and B Meads, congratulations. They were selected to play for the Waikato Development squad in the Triangular Tournament at Pukekohe. I. Billings and B. Meads were runners up in the Waikato mixed pairs Tournament for the Labrum Cup and Trophy.

Tauwhare's team of J. Hooper, J. Cottle and Amber McNally were in the last 8 at the Waikato Champion of Champions Triples – well done. They were eliminated by I. Billings's team representing Gordonton, who eventually come out Runners Up in the competition.

Our Matangi-Tauwhare Greenfield Shield team match versus Beerscourt resulted in a draw, and, as Beerscourt were the holders of the shield they kept it. B. Meads and H. and R. Bargh were in the team.

Eastern Waikato has played its 2<sup>nd</sup> and 3<sup>rd</sup> rounds in the Grupen Cup versus Cambridge and Hamilton respectively. Although Eastern lost both matches it was only by 1 point in each match. B. Meads and H. Bargh were in Eastern's team. The next and final match will be versus Hamilton Red.

Cue TV (Freeview 23, Sky 110) is repeating some of the 2011 National Championship games:

Sunday September 4<sup>th</sup> 3pm – Singles Semis and Finals

Sunday September 11<sup>th</sup> 3.30 pm – Pairs semis and Final

## RESULTS

### 21.7.11 Triples Open Tournament

Winner: R. Stewart's team - Matangi

Runner-up: D. Stobies Team - Gordonton

Tauwhare team with highest points – I. Pizzini, E. Morris, K. McNally

### 28.7.11 Club Night (3 Bowls Triples)

Winner: B. Meads, B. McNally

Runner-up I. Pizzini, L.Verner, K.McNally

### 4.8.11 Club Night (drawn pairs)

Winner: I. Spencer, D. Pizzini

Runner-up: J. Arnold, B. McNally

### 11.8.11 Club Night (Rinks)

Winner: J. Arnold, I. Pizzini, H. Bargh, E. Silvester

Runner-up J. Hooper, R. Arnold. E.Porter, D. Harris

### 12.8.11 Couples Trophy

Winner: L. and B Grieveson

Runner-up J. and R. Arnold



## UP AND COMING EVENTS

- 1.9.11 Sattrup Trophy
- 8.9.11 Club Night
- 15.9.11 Club night (Final points night)
- 22.9.11 Patron's Night.
- 29.9.11 AGM and Prizegiving
- 6.10.11 Christmas Tournament (rinks) a plate please.



## OUT AND ABOUT

- 3.8.11 Runners up at Taupiri Tournament, - J Hooper, R Coxon, L Verner, K Williams.
- 5.8.11 Eastern Waikato's Jack and Jill Tournament - Winner, J Hooper, R Bargh. Runner up, I Billings, B Meads

Until next month - Good Bowling Everyone!

Robin Bargh Phone 824 1819



# EUREKA BADMINTON CLUB



## JUNIOR CLUB NEWS

We have a couple of months left of badminton this season and next month we will begin our club championships. Our young players are improving each week so the championships should be a good competition. We were fortunate to have Amanda and Glen Brown come along and coach the children. They gave the players tips and of course there was a lot of incentive to try and beat these senior players. Both Glen and Amanda both had the superior skills in the end but a few lollies were won by the juniors! We are planning another Yankee tournament this month. If any new players are interested in playing please come along to Matangi Hall Wednesday evenings at 6pm. For more information contact Trisha Bengé 829 5531



## EUREKA EXPRESS

ADVERTISING RATES		CONTACTS - Gail or Gayle	
<b><i>Classified Advertisements</i></b>	<b><i>Free</i></b>	<b><i>Gail Mayall (Editor)</i></b>	<b><i>Gayle Orr (Treasurer)</i></b>
<b><i>Small Business Advertisements</i></b>	<b><i>\$10 / month</i></b>	<b><i>70 Eureka Road</i></b>	<b><i>1139 SH26</i></b>
<b><i>• x 10 insertions</i></b>	<b><i>\$80 / year</i></b>	<b><i>Ph 8241 758</i></b>	<b><i>R D 6, HAMILTON 3286</i></b>
<b><i>One Third Page Advertisement</i></b>	<b><i>\$15 / month</i></b>	<b><i>Fax 8241 028</i></b>	<b><i>Ph 8241 713</i></b>
<b><i>• x 10 insertions</i></b>	<b><i>\$120 / year</i></b>	<b><i>e-mail:</i></b>	<b><i>Fax -</i></b>
<b><i>One Half Page Advertisement</i></b>	<b><i>\$20 / month</i></b>	<b><i><a href="mailto:editor@eurekaexpress.co.nz">editor@eurekaexpress.co.nz</a></i></b>	<b><i>e-mail: <a href="mailto:gorr@xtra.co.nz">gorr@xtra.co.nz</a></i></b>
<b><i>• x 10 insertions</i></b>	<b><i>\$160 / year</i></b>	<b><i><a href="mailto:gailandbarry@slingshot.co.nz">gailandbarry@slingshot.co.nz</a></i></b>	



## LADIES A PLATE

These Slices are both uncooked and are quick and easy to make. Keep them in the fridge.

### APRICOT AND ORANGE FUDGE SLICE

Melt together;

125gr butter  
1/2 tin condensed milk

Add;

1 cup coconut  
1 pkt crushed superwine biscuits  
Rind of one orange plus a little juice  
Some chopped dried apricot pieces

Mix together well and press into tin.

Ice with orange icing (add some cream cheese to icing if wished).

Top with chopped apricot pieces

This recipe is compliments of Gail Mayall



### Fridge Cake

Bring to the boil,

100g Butter  
1tsp cocoa

1/2 cup sugar

Add 1 beaten egg and cool. Add 1 pkt crushed superwine biscuits and a small packet of chopped walnuts.

Press into a slice tin. Ice with chocolate icing



***Sharon Laurent***

## IN YOUR GARDEN

I would expect many of us have sustained damage to our gardens with the recent severe frosts. Don't panic though, and whatever you do, don't prune young citrus trees. Do, however, take off all fruit. This will reduce stress on your tree and help it to produce new foliage, as the frost damaged leaves that have turned brown will fall off. Then all you can do is cross your fingers.

Plant more strawberries. If you want an endless supply of berries for summer desserts get them in now. Strawberries start flowering this month, which means you can expect your first crop of ripe berries in just 6-8 weeks. Plants, both potted and bare rooted are widely available. Plant in full sun in free-draining soil, strawberries won't tolerate wet feet and the fruit will rot if it ends up sitting in soggy soil. It's a good idea to replace up to 1/3 of your plants each year. You will need at least 6 plants per person in your family, spacing them 20 -30cm apart.

Practical tips and tasks.

For those of you who have trouble growing decent carrots, dig a shallow trench, sprinkle Condy's Crystals along the row and sow the carrot seed on top. As soon as the soil starts to warm up, weed seeds begin to germinate. Knock them down with a push hoe and you will save yourself heaps of hassle later in the season. Get all those boring maintenance jobs out of the way, like spraying decks and paths to treat moss, mould and slime. Try to be patient, growth is at a snails pace but it will soon change. Plant Snow peas, broad beans, salad greens, broccoli, cabbage and cauliflower. Prune apple and plum trees now, bear in mind air-flow and ease of picking and manageability and you'll not go far wrong. Keep your tools clean and sharp, dip them in bleach after each tree.

Happy Gardening Jennifer



## TAUWHARE PLAY-GROUP

This is a casual play-group funded by the MoE for babies to 4 year olds inclusive, with their Caregivers. Anyone is welcome on a casual basis. We go on 2 – 3 trips per year, otherwise we meet at the Multi-Purpose room at Tauwhare School. Come and check us out anytime, bring a plate for shared morning tea.

**When:** Each Thursday morning of the school term between 9am and 12.00 noon.

**Where:** the Multi –Purpose room at Tauwhare School

**Contact:** Beckv Sharman nh 8240150



# MARIGOLDS



## A HISTORY OF HEALING

Marigolds have a long history of medicinal use, stretching back to the Romans and the ancient Greeks, who drank Marigold tea to relieve nervous tension and sleeplessness. It has also been used in cooking, dyeing cloth and skin care and was a well known symbol of good luck.

A popular garden plant with exceptional healing powers in particular it has remarkable healing powers in the treatment of wounds. When used for medicinal purposes, it is commonly referred to as "calendula", the name is interchangeably, marigold or calendula.

## ANCIENT USE AND FOLKLORE

Originally a native plant of ancient Egypt and first introduced into Britain by the Romans, marigold is one of the earliest cultivated flowers. It was also known to the ancient Greeks, who used its petals for decoration, to colour foods and cosmetics and as a material dye, in addition to its medicinal uses. An infusion of the herb was drunk to alleviate the symptoms of nervous tension and to prevent sleepless nights. Marigold has been cultivated in Europe since about the 12<sup>th</sup> century, by the 14<sup>th</sup> century the plant became endowed with almost magical powers.

Marigold is composed of a host of beneficial substances that act upon the body's system in a wide ranging manner. The experience of centuries and more recent scientific research gives us some fascinating information. Constituents include acids, carotenes, carotenoid pigments, cholesterol, esters, flavonoids, glycosides, gum, lactones, mucilage, resin, saponins, sesquiterpenes, tocopherols, triterpenoids (faradiol), and volatile oil. In addition, fatty acids, protein and sterols are found in marigold seed and salicylic acid in the fresh plant.

Some of the effects of these ingredients are well known – Flavonoids work as an antioxidant, neutralizing harmful substances in the body, they have an antibacterial action, because they improve the efficiency of macrophages, scavenger cells that remove bacteria from the blood. Salicylic acid, which in its chemical form is used in aspirin, is known to destroy bacteria and fungi, it also relieves pain. Volatile oil is known to stimulate circulation of the blood and cause sweating. Triterpene glycosides, terpene derivatives and polysaccharides are believed to give marigolds its anti inflammatory and antibacterial properties.

I make an ointment/face cream using marigold petals, it works amazingly on any skin problem. It's fantastic for babies with nappy rash.

GOOD LUCK  
CHERYL MCFARLANE.





### Where has all the grass gone?

There is one main issue facing dairy farmers at the moment - and that's the lack of grass. Three quarters of farmers were below their target average pasture covers (APC) at the end of August. Some as much as 500kg DM/ha below target and typically 200 kg DM/ha below target. Why is this and what can be done about it?

### Why the lack of grass?

Put simply there just hasn't been the regrowth in paddocks grazed over the last 2 months. Treading damage during the wet period is one possible reason but for me, the biggest factor is a lack of nutrients, especially nitrogen. April and May saw spring like growth using up nutrients, soil temperatures were warm and saw increased rates of mineralisation of N from the organic matter and then water logged soils have caused induced deficiencies and leaching. Bagged N and probably S are desperately needed in my view.

### What should be done?

- 1) Hold the round. Don't speed up.
- 2) Use supplement on hand or buy more in.
- 3) A last resort is to restrict the herd until the grass starts growing.



Contrary to the common urge, do not speed up the round ahead of the SRP, due to a lack of grass. Doing so simply makes the problem worse a few weeks down the track. Stick to your Spring Rotation Planner (SRP) and in fact if your covers are below target you should go even slower! That goes against instinct I know. To not speed up, when covers are below target, you either have to restrict the herd or more logically, when the milk price is high, buy in supplements to fill the shortfall (or use supplement on hand).

The hungrier the milkers, the bigger the supplement response, and therefore the better the return from supplement investment. Fortunately it is easy to justify supplement right now. The trick will be knowing when to pull the supplement when 'balance date' average pasture covers improve to 1,800 to 2,000 Kg DM/ha depending how highly stocked you are.



For some good reading on these options refer to the revised "Spring Survival Guide" available on the DairyNZ website or for a hard copy ring the farmer information line on 0800DAIRYNZ.

#### **Getting more grass to grow**

The other focus needs to be on growing more grass. Get nitrogen on at up to 50Kg N/ha (and S if you are marginal normally). You should also consider Gibberellic Acid especially if you have your own spray gear as the product is only \$10 to \$14/ha to buy plus application.

#### **Discussion Group**

The next meeting of the Eureka Discussion Group is Tuesday 13<sup>th</sup> September at Keith Law, SHWY 26 at Eureka, S/N 76611. A great opportunity to discuss the issues covered above and any farm specific topics Keith has for us.

Phil Irvine  
DairyNZ Consulting Officer  
027 4839820



## **Pukeko Preschool, Tauwhare**

"Quality early childhood education for 2-5 year olds in a caring rural environment"

Pukeko Preschool has had a busy start to Term 3, with our annual trip to the Savage's Goat Farm. The children enjoyed meeting the baby kids, and were especially fascinated to watch the goats being fed their grass off the huge conveyor belt. Thanks to Chris and Keren Savage for hosting us once again.

Many thanks to Mark Annals, a Preschool Dad and local builder, who has built us a fantastic new carpentry bench. Thanks also to Bunnings Cambridge for the donation of the resources for our Creative Crafters to use for their construction.

Continuing our focus on Sharing our World with Animals, the preschool has decided to take part in the SPCA Cupcake Day fundraiser on August 29. The children will be baking lots of yummy cupcakes to sell to their families to raise much-needed funds for the SPCA. In our community of families we have a vet and vet nurse who will come in to spend time with the children following their interest in Animal Doctors/Vets.

Spring is on its way and we have registered for the Tui School Garden Challenge. We look forward to all getting our hands dirty in the garden and seeing what exciting produce we will harvest!

As always we welcome a call or visit to our preschool, ph 8240860.



# Coughing Pets

Newstead Veterinary Services pH (07) 8564522



If your pet is coughing should you be worried?  
When should you bring your pet to the vet?

There are a number of diseases that can cause coughing in your pet; some are specific to cats, other diseases occur in both species.

Coughs can be described as being dry or wet, just like in humans. Our pets can have productive coughs but they might not spit out phlegm, instead you will see them swallow after a cough. This is because their larynx is quite far back in the head compared to us. Treatment for the cough depends on what the initiating cause is of the cough.

## Chest Infection

Just like with people, our pets can develop chest infections, bronchitis, pneumonia etc. They will be very ill and probably not eating, you will know that there is a problem. If you are at all concerned then please phone your vet and get your pet seen as soon as possible.



## Lungworm

This is a worm which lives in the lungs and causes a dry hacking cough. Your cat will probably still be bright except for the cough. It is seen in cats which hunt a lot of rabbits etc. It is not something that is seen often in dogs. The lung worm is a type of round worm. As the worm does not live in the intestines, normal worming tablets, e.g. Drontal, will not have an effect on this. However, there are products available which do work. Revolution is a flea product which also kills gut worms. It is thought that as the product goes into the blood stream it will get to the lungs as well as the guts and should kill off the lungworms. There is also an injection which can be given to kill the worms.

## Heart Disease

Heart disease and heart failure can first show as a cough to the owner. The cough can be a dry cough or a wet productive cough depending on where the problem is. A **dry cough** is heard when the enlarged heart presses on the wind pipe, or trachea, that passes over it. It causes an irritation of the trachea and leads to a dry cough. A **wet cough** is heard when the diseased heart is not pumping fluid around the body as efficiently as it should be. As not all the blood is being pumped on, some is left behind and the fluid disperses into the lung tissue. This is true is there is a problem with the left hand side of the heart; a right sided problem leads to fluid accumulation in the abdomen.

If your pet is having difficulty exercising, seems lethargic but is eating and has a dry or a wet cough, please bring it in for a check over as it could be a heart condition leading to the signs seen.

## Kennel Cough

Most people have heard of kennel cough. This is a dry cough seen after a dog has been in the company of a lot of dogs in the same air space, e.g. following a stay at kennels.







competitions, being around recently infected dogs.

The disease is caused by a bacterium, *Bordetella bronchiseptica*, and a virus working together, although each by themselves can cause a cough. There are 4 common viruses which can cause this disease and we vaccinate against the commonest one, Parainfluenza virus, with the annual vaccination.

There is a vaccine available against this disease and most kennels will ask for this vaccination on top of the annual vaccines in the peak holiday season. The vaccine gives protection against the bacterium and together with the annual vaccination should provide cover against the disease.

When a dog gets kennel cough they are contagious for up to 14 days before they show any clinical signs. Your dog will have a cough, go off their food and generally feel ill. IT is best to get them seen to quickly if you are suspicious of Kennel Cough

### **Tracheal Collapse**

Some small breeds of dogs can have a problem with the cartilaginous rings of their trachea and they can collapse when the dog gets very excited and tries to breathe too quickly. This will produce a honking cough which is quite distinct and sounds goose-like. The dog will be very bright in themselves except during the attacks.

### **Tumours**

Unfortunately in a small number of pets, a cough might be the first signs that an owner sees when their pet has a cancer, or neoplasm. The cancer can start originally in the lungs or it can spread from other cancers elsewhere in the body and end up in the lungs. The cough tends to be dry.

*If you have any concerns about a cough in your pet then it is best to get it checked out at your vet sooner rather than later.*

If you have any questions then please do not hesitate to call the team at Newstead Veterinary Services as we are happy to answer any queries that you may have related to this article or any other articles seen.



## THE BEAUTY HOUSE

Personalised, friendly service

dermatech

Oasis beauty

**Do you need some pampering? All facial treatments are \$40!**

PURCHASE AN OASIS FACIAL MASQUE (50gm) 3 TO CHOOSE FROM & RECEIVE A FREE EYE WHEAT PACK.  
PURCHASE ANY OASIS DAY MOISTURISER & PURCHASE A TREATMENT SERUM FOR HALF PRICE - 3 to choose from (rrp \$32.50).

*Bella Vi.*  
PURE MINERAL COSMETICS

NZ made gorgeous 100% natural mineral cosmetics at an affordable price. Book for a no obligation free trial.  
Spend \$100 or more in SEPT and receive either a free lash or brow tint!

**FULL BODY SUNEX SPRAY TANS NO ORANGE!! ALL NATURAL INGREDIENTS ONLY \$25!!!**

**Gift vouchers & Gifts for purchase (Only Polishes, Cuccio Body Products, Skin Deep)  
Good honest value for money with exceptional service and help with any issues from  
skincare to hair removal. (Eft-Pos available)**

Tauwhare Village, 10926 Tauwhare Road

Ph: Jacqueline 8240950 or 0274 853985 Email: [thebeautyhouse@xtra.co.nz](mailto:thebeautyhouse@xtra.co.nz)

find us on  
Facebook The Beauty House



## \*\*\*\* NOW IN EUREKA \*\*\*\*

Plus MORRINSVILLE & HAMILTON

### 2011 CLASS TIMETABLE

MON	7.30 - 8.30pm	EUREKA - Eureka Hall, SH26,
TUES	7.30-8.30pm	HAMILTON - St Peters Hall, 51 Victoria St, CBD
WED	6.00-7.00pm	MORRINSVILLE - Senior Citizen Hall, Canada St
WED	7.30 - 8.30pm	EUREKA - Eureka Hall, SH26,
FRI	6.00 - 7.00pm	MORRINSVILLE - Methodist Church, Thames St

### PRICES

Casual Class	\$10
Student / Pension	\$6
Concession Cards:-	
(For 10 Classes)	\$70 (3 months)
(For 20 Classes)	\$120 (6 months)
Family Pass	\$20
2 x Adults & 2 x Children (under 14 yrs)	

**FIRST TIME TO CLASS ONLY \$4**

Join Zumba Instructors - Megan Hyland, Sarah Rasmussen, Marcia Davie

Ph: 021 905335 (Megan) 027 3871333 (Sarah) Email: [megan.zumba@xtra.co.nz](mailto:megan.zumba@xtra.co.nz)

## Absolute Skin Therapy

An Institut' DERMED Spa Partner



### Prepare for winter Save \$\$

with a microdermabrasion exfoliation facial. As the weather gets colder more cells dry out and accumulate on the skins surface. If the old cells remain on the surface and build up, they contribute to a flat, dull appearance and blemishes. Cells move from the base of the epidermis up to the top in a 30-day cycle. Microdermabrasion can correct rough skin texture and acne. Exfoliation also helps improve the penetration of serums and other skin care products.  
**Now Only \$45**



### Brilliant New Natural Skin Care Products

From The Jojoba Company. Jojoba has long been recognised for its unique qualities. It soothes, nourishes and moisturises skin like no other substance on earth. Jojoba is an excellent anti-aging treatment. Exceptionally well priced from as little as \$24.90.

### Save More Than \$160!

Call us now and ask about joining our **Queen of Referrals Club**  
For every friend you refer, YOU get to enjoy huge discounts on selected treatments!

Experienced, Professional, Helpful Advice

My philosophy is to help educate you about the best possible skin care solutions so YOU can achieve your desired results - Nelly  
284 Tahuroa Road Tauwhare Tele 8240 762 [www.absoluteskintherapy.co.nz](http://www.absoluteskintherapy.co.nz)

## Eureka Precast Concrete

117 Hooper Road

**Manufacturer of the following  
Farm and Small Block Concrete Products**

Palm Kernel Feeding Troughs

Feeding Pad Troughs

1,000 Litre Oblong Water Troughs

200 Litre Round Water Troughs

Offal Hole Lids

Septic Tank Replacement Lids

Plus Much More

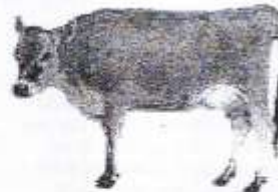
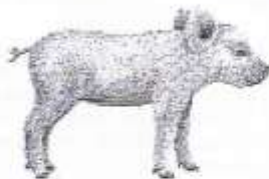
Ph. Ian Manning – 0274 961902      824 1988 a.h.

## JBVisserVets

The team of **JBVisserVets** pride themselves on providing you top quality care for all large animals. Be it dairy, beef or lifestyle, your animals are in the best of care. Customer focused to the highest of quality, **JBVisserVets** look forward to meeting you today.

**0800 VISSER**

**47 Lorne St Morrinsville / 161 Morrinsville Road Newstead**



**JBVISSE  
VETS**

07 889 0414

**INNOVATIVE**





870 SH 26 Newstead  
 Brent 0272 432 011  
 mcfarlanes@farmside.co.nz

Ph 824 1186  
 Brent 0272 432 011

- Hay / Haylage—round, square, conventional
- Grass & Maize Silage
- Full ground cultivation
- Maize and Crop Planting
- Land lease & Share Cropping
- Spraying
- Truck & Trailer Hire
- Digger
- Metal injected sub-soil irrigation



"Helping farmers feed their cows"



## Ctas NZ Ltd

www.ctas.co.nz



**Specialists in:**

- Professional systems online and PC development
- Online internet based and PC/Lan Systems development
- Business Websites – FREE development (conditions apply)  
 Check out <http://ctas.co.nz/Webs/Home.aspx> to see more.
- Alert-Me - Online TXT and Email reminder system, ideal for everything, from birthdays, appointments, sporting, gardening, TAX, WOF, Registration and many more. One off or recurring. Free for home use. Go to [www.Alert-Me.co.nz](http://www.Alert-Me.co.nz)
- YouTXT – Operate your own TXT shortcode using our TXT system for free. Go to [www.youtxt.co.nz](http://www.youtxt.co.nz)
- FlightCheck – Check your Flight details, real time from your Mobile Phone. TXT Flight number to 8808. Txt's cost 50c

Phone: 07 824 1025  
 Email: [grant@ctas.co.nz](mailto:grant@ctas.co.nz)








**Newstead Veterinary Services**  
 161 Morrinsville Rd (SH26)  
 Phone (07) 856-4522 Fax (07) 8569487  
 email: [admin@newsteadvets.co.nz](mailto:admin@newsteadvets.co.nz)  
[www.newsteadvets.co.nz](http://www.newsteadvets.co.nz)

We offer a comprehensive range of services for dogs, cats and small pets.

- Puppy pre-school classes
- Comprehensive range of pet care products and pet food
- Nutritional advice with onsite pet dietician and free weight clinic
- Cremation with a local pet crematorium, with optional return of ashes
- Isolation ward
- NZVA Microchipping Accredited Practice
- MAF Accredited vets for pet export certificates to Australia
- Ample parking

**We believe that pets are important members of your family.**



**Gayle Orr**  
 Spiritual Counsellor & Teacher  
 Working with angels to relay  
 Messages from loved ones  
 Personal Readings  
 Healing  
 Spiritual Counselling  
 Meditation & Relaxation Classes

**For a personal reading  
 phone: 07 824 1713**

**Got A Leak?  
 Save \$\$\$  
 Fix it yourself with**

**Feb Aquaseal Hyband  
 the leak repair kit in a roll**

- Easy to cut, mould and apply
- Instant watertight seal
- Lasting bond
- Wide range of uses

Available from 50mm to 450mm wide  
 Stop leaks in roofs, hay barns,  
 covered yards, milking sheds, cars,  
 trucks and caravans  
 Use for patch repairs and for flashings

To find out more..... call Debbie  
 Ph 07-8241644 or 027-247 9367

**CALF COVERS**  
 "Canvas, Jute, or satin  
 lined for Calf Club"

I also manufacture horse covers,  
 trailer covers or any other kind of cover you may  
 want. Good quality, P.V.C. horse gear bags — can also  
 be used for dive bags.  
 Good quality at reasonable prices.

**Phone Narelle Pollock  
 824 0736**



**CAMBRIDGE  
 CARPET  
 CLEANING**  
*Servicing the Waikato*

**Also**

- ✓ Upholstery Cleaning and Protection
- ✓ Flood Restoration
- ✓ Stain Treatment
- ✓ Auto and Marine Work
- ✓ Window Cleaning
- ✓ Senior Citizens Rates

**Phone Grant on 0275 542 116  
 Or 07 823 7031  
 Locally Owned and Operated**

**Local builder  
 Tauwhare Road resident  
 Registered Tradesman**



Concrete work  
 New homes  
 Renovations  
 Alterations  
 Farm buildings  
 Decks  
 Fences  
 Bathrooms  
 Kitchens  
 Roofing

Over 29 years building experience  
 No job too big or too small

**Craig Griffin Builders Limited**  
 Phone Mobile: 027 279 2882  
 Phone/Fax After Hours: 824 1607  
 Email: craigandjackiegriffin@ihug.co.nz

**nzgarden sheds**  
*the best little sheds around*

Your local garden shed supplier of  
 NZ made, self assemble Garden Sheds  
 (Zincalume or Colour Steel)

**GET IN TOUCH...**

- \* EASY ASSEMBLY
- \* MADE TO LAST!

**Waikato Shed Company**  
 218 Hunter Road, Eureka,  
 Hamilton  
 Phone: 07 824 1045  
 Email: sales@nzcgardensheds.co.nz

**EQUIRE FOR A BROCHURE NOW**

**Trusler  
 Contract  
 Lawn Mowing**  
 Fast, efficient, reliable



Free, no-obligation quote and  
 advice  
**Lex Trusler**  
 Ph: 824 1906 Mob: 027 221 0861  
 Fax: 824 1907  
 Lifestyle blocks—sections  
 Road verges—horse studs  
 20 yrs + experience

**Scanlan & Jones**  
 Specialists in:

- ✓ Wood Fire Sales
- ✓ Wood Fire Installation/Repairs
- ✓ Hearth Manufacturers
- ✓ Outdoor Fire Installations
- ✓ Chimney Sweeping
- ✓ Heat Transfer Kits — Sales & Installation



Registered Installers  
 Over 17 Years Experience  
 Free Quotes

**Contact Justin & Brendon  
 0274 834 267 (day)**  
 A/Hrs: 07 824 0950 Fax 07 824 0951  
 Email: scanlan.jones@xtra.co.nz

Member of New Zealand Heating Association 

**HAIRFIELDS**  
 HAIR DESIGN  
 95 HOOPER ROAD  
 Sharon Laurent

Full salon facility in Eureka  
 Total hair care professional  
 with many years experience  
 Agent for Nutrimetics also



Open Tuesday to Friday  
 Late nights Tues/Thurs  
 Tel. 824 1712 or 027 280 5978



**SPYVES PANEL SHOP**  
for all  
Panel and paint requirements



**AUTOROBOT CHASSIS  
and  
ALIGNMENT MACHINE**

Ph Ron or Karen 8241 890  
Fax 8241 892  
Mob 027 280 0346

**ROSS PUMPS**

&  
Filtration Specialists Ltd



Servicing and installation  
On all types of pumps  
Full Water Treatment  
Service Available

**DAREN ROSS**

Tel. 8241 726 or 0274 346 571  
Fax. 8241 879  
Email: rosspumps@xtra.co.nz

**COMPUTERISED  
BULK SPREADERS LTD**

For all your spreading needs



**FERTILIZER, LIME, UREA**

Top Service,  
Competitive Rates

Roger Springett  
103 Hooper Road Eureka  
Ph. 8241 175  
Mob. 0274 970 413

**EUREKA  
POULTRY FARM**

13 Hooper Road  
Ph 824 1762  
NIC & MARIA STOLWYK  
Hobby Hens



Young pullets from  
5 weeks to point-of-lay  
Great for lifestylers  
Bagged up chook manure  
Hours Mon-Sat 8-6

**Green Acres**

Professional lawn and  
Garden care service



**Maurice Smith**

For free no-obligation quote:  
Ph: (07) 824 1948  
Mobile: 0274 797 282  
Fax: (07) 824 1947  
Email: msmith@clear.net.nz  
Ride-on mowing specialists  
Give your lawn the perfect finish

**IAN MANNING  
REGISTERED DRAINLAYER**



For all drainlaying work  
New or alterations  
Residential & Commercial  
Blocked drains cleared  
Maintenance  
Prompt service

Tel. 8241 988  
Fax. 8241 989  
Mob. 0274 961 902

**Kelvin Lalich  
Builders Ltd**

- New homes
- Alterations
- Large & Small  
Commercial Buildings
- Chicken Sheds

Phone 889 3951 (bus)  
889 3975 (a/hrs)



**"Building  
with Pride"**

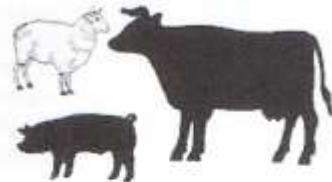
**FRESH  
APPLES & PEARS  
STONEFRUIT IN SEASON**



**NEWSTEAD ORCHARD**  
552 Morrinsville Road

OPEN MON-SAT,  
W J McMiken & Co  
Morrinsville Road  
Tel. 856 4478

**TAUWHARE  
HOME KILLS LTD**



Tauwhare Village  
Owner Operators  
Trevor & Leonie Brunton

On Farm Killing Service  
All beef hung for 7 days  
**FREE OFFAL DISPOSAL**

Ph 524 0880 all hours  
Fax 524 0809  
Mob 0274 757 215





# EUREKA MOTORS

COLIN DUNCAN (PROP). SH 26, OPPOSITE EUREKA HALL

**WE ARE EQUIPPED AND SKILLED TO CARRY OUT  
ANY REPAIRS NEEDED ON ALL TYPES OF VEHICLES**

Our experienced workshop staff guarantee to provide quality service  
to all our customers

If we don't have the right part in stock we'll get it for you straight away  
if you need some work done, why not give us a try?

**OPEN MONDAY - FRIDAY 7.30am - 6.00pm**

**SATURDAY 8.00am - Noon**

**Ph 8241 773 Fax 8241 073**

## **WALLING CONTRACTING LTD** **'YOUR PROVEN LOCAL ONE STOP CONTRACTORS'**

**WE CAN OFFER YOU THE FOLLOWING SERVICES:**



- \*Grass Silage
- \*Ploughing
- \*Rotary Hoeing
- \*Ripping
- \*Undersowing
- \*Baling & Wrapping
- \*Digger (12 Ton)
- \*Grass Crop Sales

- \*Maize Silage
- \*Power Harrowing
- \*Discing
- \*Maize Planting
- \*Roller Drilling
- \*Power Harrow/Seedbox
- \*Shavings & Sawdust
- \*Maize Crop Sales



**FOR ALL YOUR CONTRACTING NEEDS  
PHONE LEN OR BECKY  
ON  
824 0894 (anytime)**

# How To Avoid Costly Yet Common Mistakes When Building Your New Shed

## Find Out What Other Shed Companies May Not Tell You



Adjusting the bay widths on this shed used by a food distribution business reduced waste space between the trucks and increased valuable storage space.

It's disappointing when you discover that something you paid good money for turns out to be of poorer quality than expected. Perhaps due to inefficient & outdated design it doesn't exactly suit your needs or doesn't "measure up" in some areas. That's why we take time to custom design your ideal shed and only use high quality steel materials with best building practices.

Contact us to receive a copy of our **FREE** booklet packed full of information and advice that will save you time, money & stress. It will help you to compare building systems and materials to help you choose which is most suitable for you. We'll make sure you avoid costly mistakes and get a great shed, done right!

## FULL DESIGN & BUILD OR KIT SET ONLY OPTIONS

Once we have custom designed the shed that best meets your needs, you can choose to build it yourself, or have our experienced builders complete it for you. The majority of kit components come cut to length with bolt holes pre-punched for accuracy. We are also happy to stand the frame only, leaving you to handle the cladding, roofing, door fitment etc. You have the flexibility to do as much (or as little) of the work as you are comfortable with.



Recently constructed 14 x 16 x 4.2m American Barn with ply & batten cladding on end wall and internal dividing wall. Built near Matamata, this shed utilises a partial clear span design to provide an unobstructed work shop area.



*Our multi-purpose shed was a challenging build and Waikato Sheds did a first class job of it. Their attention to detail and quality of workmanship was really good. Nothing was too much trouble.*

**Rob Waddell**, Olympic Gold Medalist,  
Americas Cup Sailor

## FARM • INDUSTRIAL • LIFESTYLE



Freephone **0800 555 147**  
218 Hunter Road, Eureka  
[www.waikatosheds.co.nz](http://www.waikatosheds.co.nz)

**WAIKATO SHED**  
COMPANY ✓  
great sheds, done right!  
Hamilton • Taupo



# STEEL FRAME BUILDINGS

## Custom design and build

Morrinsville Veterinary Clinic was looking for a competent and reliable building company to design, engineer and build their new clinic. Waikato Shed Company came highly recommended.

### So you thought we just did sheds?

Through our strategic partnerships with architects, engineers and builders such as Kelvin Lallich, Waikato Sheds is well equipped to undertake significant industrial building projects.

The new Morrinsville Veterinary Clinic was by no means an easy project. With a high degree of precision required, there was no room for error in getting the steel portals to fit within the erected tilt slab walls.

By working closely with our strategic partners and each playing to our respective strengths, we tackled this challenging project and delivered on time and within budget.

The result is a great purpose built facility of the highest quality design and construction that didn't cost the earth.

Morrinsville Vet Clinic during construction revealing extensive steel framing

To find out how affordable your next industrial building could be, call Brian or Aaron on **0800 555 147**

[www.waikatosheds.co.nz](http://www.waikatosheds.co.nz) | SH26, Eureka



**WAIKATO SHED**  
C O M P A N Y ✓

great sheds. done right!

Hamilton • Taupo

bedberrtm